



The House of Rayne

A private Art Gallery near The South Downs
showing the work of living artist Colin Rayne



The Ancient of Days Glass Sculpture 38" x 30"

The House of Rayne – A Private Art Gallery Near The South Downs

Opens Daily by appointment 01273 302826

<http://www.thehouseofrayne.co.uk>



The House of Rayne

A private Art Gallery near The South Downs
showing the work of living artist Colin Rayne

Contents

Visiting the Gallery

Framed Paintings in Oil and Acrylic	4-10
Clocks	12-14
Commissions	15-16
Elliptically Framed Glass Sculpture	17-21
Figurative and constructive sculpture	22-25
Kinetic Art	26
How to Find Us	27



Enlightenment On The Tye—Framed Oil Painting 25" x 17" £650

The House of Rayne – A Private Art Gallery Near The South Downs

Opens Daily by appointment 01273 302826

<http://www.thehouseofrayne.co.uk>

Visiting the Gallery

The House of Rayne Gallery includes Paintings, Glass Sculpture, Figurative Sculpture and Clocks. The gallery is located just 6 miles from Brighton and is open throughout the year by appointment.



Artefacts from around the gallery

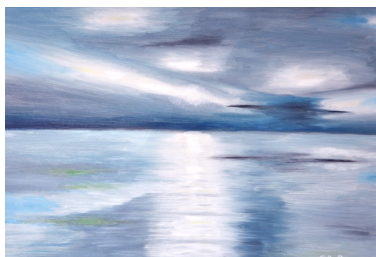


For map
and How to Find Us
view Page 27

Framed Paintings In Oil And Watercolour



EASTBOURNE COASTLINE
23" CIRCLE £200 (Watercolour)



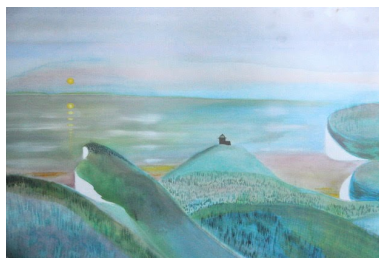
REFLECTION
25" x 17" £500 (Oil)



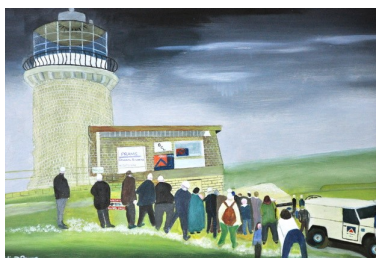
NEWHAVEN HARBOUR
24" x 17" £195 (Oil)



SEA AT DAWN
20" x 16" £250 (Oil)



BELLE TOUT LIGHTHOUSE
37" x 28" £500 (Oil)



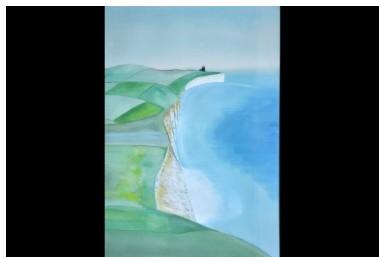
THE MOVING OF BELLE TOUT LIGHTHOUSE
20" x 16" £500 (Oil)

The House of Rayne – A Private Art Gallery Near The South Downs

Opens Daily by appointment 01273 302826

<http://www.thehouseofrayne.co.uk>

Framed Paintings In Oil And Watercolour



BELLE TOUTE
37" x 29" £500 (Watercolour)



THE WALKER
20" x 16" £375 (Oil)



CUCKMERE HAVEN II
20" x 16" £150 (Oil)



CUCKMERE HAVEN
37"x 31" £500 (Oil)



CUCKMERE HAVEN
20" x 16" £250 (Oil)



RAPEFIELD ON BEACHY HEAD:
20" x 20" £150 (Oil)

The House of Rayne – A Private Art Gallery Near The South Downs

Opens Daily by appointment 01273 302826

<http://www.thehouseofrayne.co.uk>

Framed Paintings In Oil And Watercolour



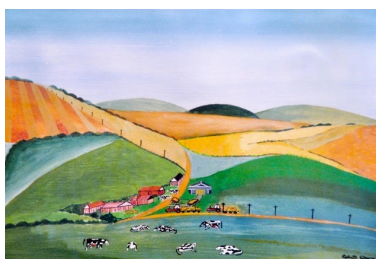
DUKES FARM
23" x 13" £200 (Oil)



WEST PIER BRIGHTON
(with original bolt) £600 (Oil)



ARTIST'S CLIFFE TOP GARDEN
IN PEACEHAVEN
20" CIRCLE £375 (Watercolour)



PICKERS HILL FARM
30" x 20" SOLD (Watercolour)



STUD FARM
25" x 22" £375 (Oil)



COOMBE FARM
29" x 20" £400 (Watercolour)

The House of Rayne – A Private Art Gallery Near The South Downs

Opens Daily by appointment 01273 302826

<http://www.thehouseofrayne.co.uk>

Framed Paintings In Oil And Watercolour



OVAL GREENS
20" x 16" (Prints @ £50) (Watercolour)



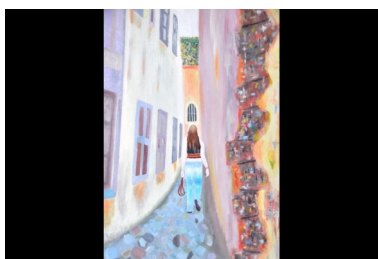
EXIT FROM IMBROS
43" x 27" Not For Sale (Oil)



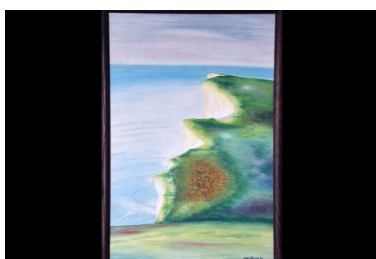
RECLINING NUDE (After Modigliani)
43" x 22" £500 (Oil)



LORD AMHERST'S GARDEN
18' x 18" £250 (Watercolour)



PORTU STREET CHANIA
48" x 24" £650 (Oil)



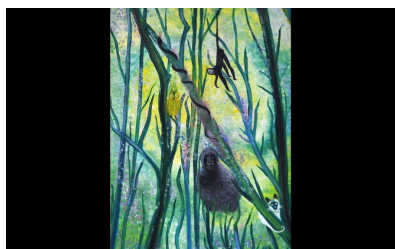
CLIFF AT BEACHY HEAD
26" x 18" £150 (Oil)

The House of Rayne – A Private Art Gallery Near The South Downs

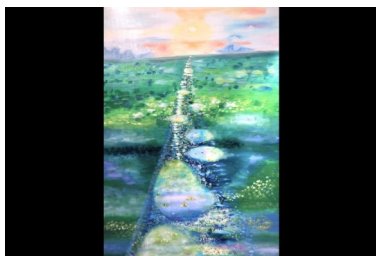
Opens Daily by appointment 01273 302826

<http://www.thehouseofrayne.co.uk>

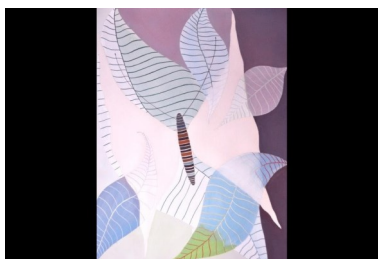
Framed Paintings In Oil And Watercolour



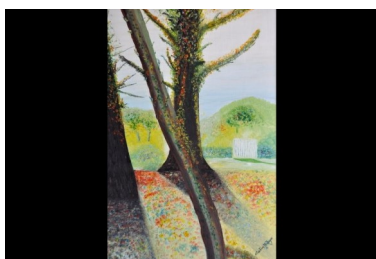
THE OWL AND THE PUSSY CAT
24" x 16" SOLD (Oil)



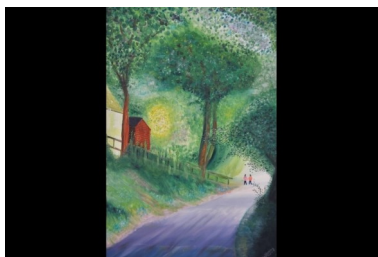
TYE PUDDLES & WATERLILLIES
48" x 24" £750 (Oil)



WINGS AND LEAVES
38" x 30" £650 (Watercolour)



SOUTHILL LANE EASTCOTE
26" x 17" Not For Sale (Oil)



THE TERRIBLE TWINS
41" x 26" £650 (Oil)



APPROACH TO TELSCOMBE
23" x 19" Not For Sale (Oil)

The House of Rayne – A Private Art Gallery Near The South Downs

Opens Daily by appointment 01273 302826

<http://www.thehouseofrayne.co.uk>

Snowfall in Saltdean

27" x 22" Acrylic £600

A fresh snowfall always looks beautiful. This image is of the view from a large picture window, at my previous address in Saltdean in 1991

The mound of earth, symmetrically curved possesses a mystical but natural quality, and the snow adds a natural wholesomeness. Most people like clean fresh snow, and even at the low light of dusk and night-fall, it seems to offer a pleasant aura.



My 'bucket list' includes a tour of the Swiss Alps on the Glacier Express; – hopefully in winter 2019; so look forward to a series of Swiss Snow Scenes in the future!

Enlightenment On The Tye

Framed Oil Painting 25" x 17" £650

The title refers to Telscombe Tye, which is a part of The South Downs, and just a few minutes walk from The House of Rayne, and where I have walked regularly for many years.

I painted this in 1998, gaining much pleasure on reflecting the sheer joy of seeing this outstandingly beautiful view for the first time. The 'double shaft of light' emitted by the cloudy sky, reflected on the calm sea, suggests an 'enlightenment' and reassurance of the presence of a supreme being whom man can know by his amazing works of nature.



Tye actually means 'enclosure' or common pasture, and is an area of registered common land. Its farming ensures that wild flowers and ground nesting birds can flourish. The Tye is one of the few places on the South Downs, West of Seaford, where the downland meets the sea, uninterrupted by development.

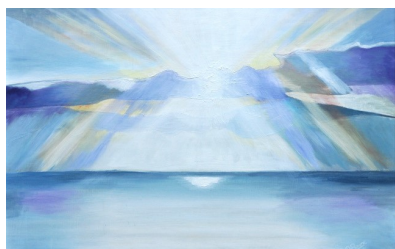
A so-called 'Funeral Track' runs down the middle, which in past years has been the haunt of highwaymen. It was also a route used by smugglers, on their way to Lewes, and by Funeral Processions, on their way to Telscombe Village Church.

The House of Rayne – A Private Art Gallery Near The South Downs

Opens Daily by appointment 01273 302826

<http://www.thehouseofrayne.co.uk>

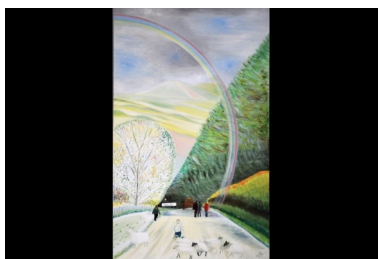
Framed Paintings In Oil And Watercolour



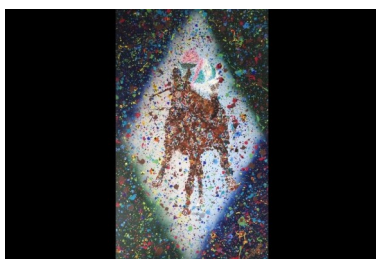
SEA AT DAWN
25" x 16" £250 (Oil)



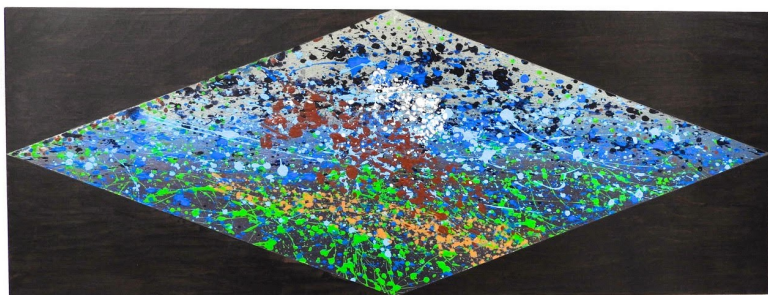
SEASPRAY AT SALTDEAN
20" X 16" £150 (Oil)



TOWARDS TELSCOMBE VILLAGE
70" x 42" £750 (Oil)



FRANKEL
40" x 22" £600 (Oil)



ABSOLUTE SHAMBLES
48" x 18" £500 (Watercolour Acrylic)

The House of Rayne – A Private Art Gallery Near The South Downs

Opens Daily by appointment 01273 302826

<http://www.thehouseofrayne.co.uk>

The Ancient of Days

William Blake was one on many artists whose work I studied very early on in my life.

It says something for the piece, that very many years have elapsed since then, but the work is still firmly embedded on my memory. Little wonder, because though not recognised in his lifetime, Blake is considered a 'seminal figure' in the visual arts and poetry, and one of Britains greatest men.

He was a little mad, perhaps a positive quality in many artists, which allow us to leave inhibitions aside, and to focus on creativity.

The Ancient of Days, is based upon a 10" x 8" print for book illustration, and one of eight slightly different prints that he made of the same subject.

After making the 'elliptical frame' I used spray paint to reproduce the whole backdrop: i.e. the central circle, the clouds and the shafts of light coming through them. No paint could be applied after the glass had been added, in case its fine spray, obscured the glass, despite any masking off; observed by previous experience.

The central figure, 'God' within the sphere and holding a pair of dividers which reaches down into the 'void' is intended to suggest God creating the world, and perhaps simultaneously, judging it. The God figure is made from 3mm & 4mm silver glass. Using some artistic licence I have place a 'Martian, red Sun' shown at the top of figure.

I hope that Blake would be flattered by my tribute to him, were he with us today, and that my followers will find it of interest, and offer some stimulating thought!



Clocks

Our collection of Clocks is not for sale but we accept commissions to your bespoke design.



KINGSTON BROOCH: 25" x 25"



BRAIN CLOCK - 22" CIRCLE
Cambridge Centre for Brain Repair



STONEHENGE 2000 CLOCK: 49" x 22"



SUTTON HOO HELMET: 17"



THE PALACE PIER BRIGHTON: 30" CIRCLE



WEST PIER BRIGHTON: 18"

The House of Rayne – A Private Art Gallery Near The South Downs

Opens Daily by appointment 01273 302826

<http://www.thehouseofrayne.co.uk>

Clocks

Our collection of Clocks is not for sale but we accept commissions to your bespoke design.



SWEATER CLOCK: 30"



GLOBE THEATRE CLOCK: 12"



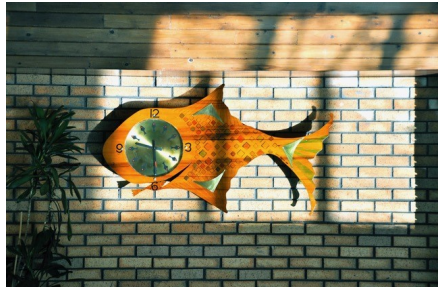
AKASH INDIAN RESTAURANT: 22"



CASALINGO ITALIAN RESTAURANT 18" x 18"



LONDON BRICK CLOCK: 16"



JAWS SWIMMING POOL CLOCK 36"

The House of Rayne – A Private Art Gallery Near The South Downs

Opens Daily by appointment 01273 302826

<http://www.thehouseofrayne.co.uk>

Clocks

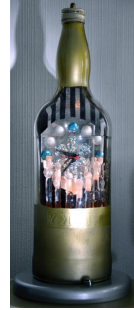
Our collection of Clocks is not for sale but we accept commissions to your bespoke design.



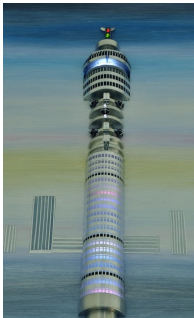
CO-OP MILK BOTTLE CLOCK: 9"



PERRIER BOTTLE CLOCK 12"



BELLS WHISKEY CLOCK: 22"



TELECOM TOWER CLOCK: 25" x 14"



OFF YER NUT CLOCK: 14" CIRCLE



GLOBAL CLOCK: 60" x 48"



BUTTERFLY on LEAF: 28" x 22"

The House of Rayne – A Private Art Gallery Near The South Downs

Opens Daily by appointment 01273 302826

<http://www.thehouseofrayne.co.uk>

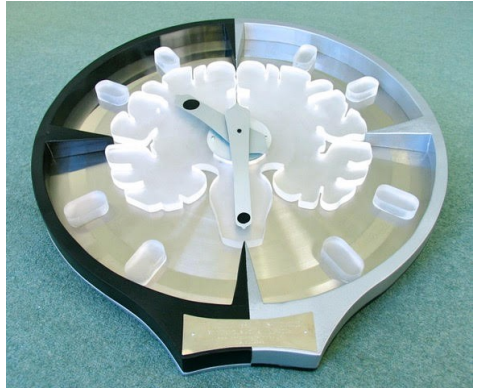
Commissions

Brain Clock

For reception of Cambridge University's Centre For Brain Repair.

The Brain Clock features a Cross-Section of the Human Brain, crafted from 15mm thick translucent acrylic, and mounted on a Polished Stainless Steel Fascia. It has a Heavy Duty Quartz Movement, with a 9 inch Long Minute Hand.

The clock is 22 inches in diameter and 2 inches deep.



Professor James Fawcett and his researchers commissioned the clock, funding it with the proceeds from House of Rayne's 2005 and 2006 Summer Exhibition Parties (value of clock: £850). It was presented and installed at Cambridge on 11 May 2007

Stonehenge 2000 – Neolithic Time

The wall mounted sculpture recreates the most ancient relics of the Stonehenge monument, showing the stones as they would probably have looked when first built.

An Arc of twelve 'Sarcen' stones in acrylic, light individually, to indicate the 'hour', and an 'Oval' of acrylic 'intel' stones divided into sixty, indicate the minute. Time showing: 9.23.



The inner rings and the 'Alter' stone are cut from 'Spotted Dolerite' from the Presilli Hills of Wales. (The same location from which the actual monument's stone was obtained). The clock's circuitry is based upon 4.193mhz crystal, subdivided into minutes and hours. The 72 LEDs are driven from serial shaft registers; – 'CMOS' logic is used..

The House of Rayne – A Private Art Gallery Near The South Downs

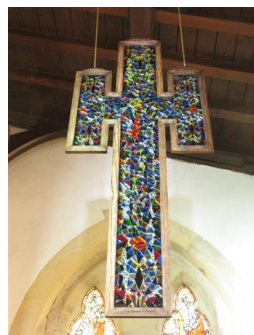
Opens Daily by appointment 01273 302826

<http://www.thehouseofrayne.co.uk>

Grecian Style Cross for The Church of St. Margaret, Rottingdean, East Sussex

Multi-coloured Glass Collage. This handcrafted Oak Framed Cross, contains between 1750 and 2000 multi-coloured pieces of stained glass, mounted on silver to reflect maximum room light thus offering maximum brilliance of colour.

It was suspended from the roof timbers inside The Church of St. Margaret, Rottingdean on Dec. 20 2006. One can visualise the Christ Figure within the design, which also depicts blood from his wounds at side, feet and hands.



The Cross is 5ft 9inches long and 2ft 5inches wide, by 1 inch deep. It weighs 40 pounds. The Cross was privately commissioned by Elma Miller, congregant of St. Margaret's, who has been a frequent visitor to the House of Rayne's Summer Exhibitions.



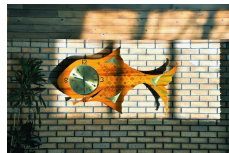
Casalingo Italian Restaurant
Clock Commission 16" x 16"



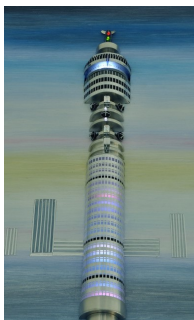
Akash Indian Restaurant
Clock 18"h Commission



Global Clock 60" x 48" Commission
for mobile phone shop



Jaws Swimming Pool Clock 36"
Commission for Rottingdean Place



Telecom Tower Clock 1": 30' Post
Commissioned by Post Office



Perrier Bottle Clock 12"
Commissioned by Aqualac Ltd



Bells Whiskey Clock
Private Commission

The House of Rayne – A Private Art Gallery Near The South Downs

Opens Daily by appointment 01273 302826

<http://www.thehouseofrayne.co.uk>

Elliptically Framed Glass Sculpture



THE ANCIENT OF DAYS AFTER BLAKE
38" X 30" CIRCA £1000



THE MILLER CROSS AT THE CHURCH OF
ST. MARGARET: 69" X 29" SOLD



CROSS 14" X 9" - MOCK-UP FOR
ST. JOHNS CHURCH



STAR CROSS
24" X 20" £200



CELLO & BOW
17" X 13" £375



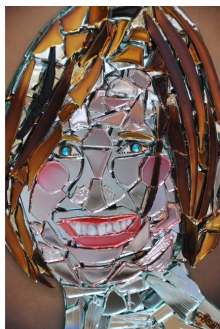
ADELE 18" X 15"
NOT FOR SALE

The House of Rayne – A Private Art Gallery Near The South Downs

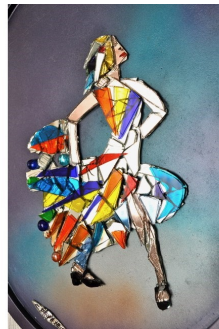
Opens Daily by appointment 01273 302826

<http://www.thehouseofrayne.co.uk>

Elliptically Framed Glass Sculpture



JANET ST PORTER
20" X 16" £300



CARMEN
24" X 20" £250



DANCING PAIR
13" X 17" £150



FLAMENCO DANCERS
46" X 38" £1750



LA SALSA
21" X 17" £250



ALI V FRAZIER
21" X 16" £350

The House of Rayne – A Private Art Gallery Near The South Downs

Opens Daily by appointment 01273 302826

<http://www.thehouseofrayne.co.uk>

Elliptically Framed Glass Sculpture



A P MCKOY ON MOUNTAIN TUNES
29" X 24" £1000

ARTIST WITH
FRANKEL AT EPSOM
SHOWING SCALE
OF ARTEFACT



FRANKEL AT EPSOM
46" X 38" £2500



ABSOLUTE SHAMBLES
48" X 18" £500



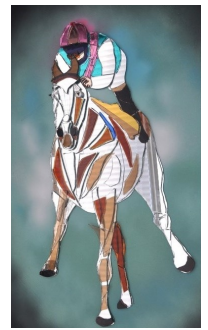
ARKLE
43" X 35" £1750



DESERT ORCHID
46" X 38" £2000



DESERT ORCHID (PORTRAIT)
29" X 24" £950



FRANKEL
43" X 35" £2500

The House of Rayne – A Private Art Gallery Near The South Downs

Opens Daily by appointment 01273 302826

<http://www.thehouseofrayne.co.uk>

Elliptically Framed Glass Sculpture



KELLY HOLMES
16" X 13" £250



BELLE TOUT LIGHTHOUSE
20" X 16" £350



SILENCE
24' X 20" £1000



SAPPHIRE
24" X 20" £300



CHARLES & TOOTSIE
20" X 16" £250



SCOOBIE DOO
24" X 20" £350

The House of Rayne – A Private Art Gallery Near The South Downs

Opens Daily by appointment 01273 302826

<http://www.thehouseofrayne.co.uk>

Elliptically Framed Glass Sculpture



PARROT ON PERCH
24" X 20" £200



ANDY FORSYTH
13" X 11" NOT FOR SALE



SIMON & COLIN
20" X 17" NOT FOR SALE



CLOWN 1
24" X 20" £500



FEDERER
18" X 14" £150



SHANTI SPANIEL CANINE CARICATURE
15" DIAM CIRCLE £150

The House of Rayne – A Private Art Gallery Near The South Downs

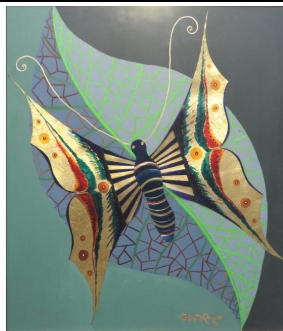
Opens Daily by appointment 01273 302826

<http://www.thehouseofrayne.co.uk>

Figurative and Constructive Sculpture



THE EAGLE OF THE SOUTH 8' WINGSPAN -
MARINE PLYWOOD & VARNISH £750



BUTTERFLY KALEIDASCOPE
24" X 22" £150



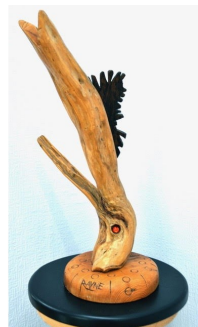
APPLE ROOT VASE
24" £150



CANDELABRA
72" £2,500



CROCODILE: 54"
Not For Sale



DANCING FISH
24" £150

The House of Rayne – A Private Art Gallery Near The South Downs

Opens Daily by appointment 01273 302826

<http://www.thehouseofrayne.co.uk>

Figurative and Constructive Sculpture



DIAMOND ACRYLIC
43" £150



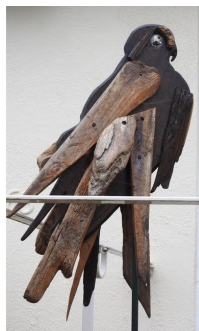
DRAGONFLY ROOT
50" £500



EVE MOBILE
40" £500



FOSSILISED TREE ROOT
14" Not For Sale



HAWK: 51"
Not For Sale



HISSING CAT
17" £100

The House of Rayne – A Private Art Gallery Near The South Downs

Opens Daily by appointment 01273 302826

<http://www.thehouseofrayne.co.uk>

Figurative and Constructive Sculpture



NAVIGATION
16" £150



PELICAN: 55"
Not For Sale



REINDEER HEAD
18" £175



SALTDEAN SHORE SHELLS
18" CIRCLE £150



SARASOTA SHELLS
12" Not For Sale



THE GLOVE
12" £100

The House of Rayne – A Private Art Gallery Near The South Downs

Opens Daily by appointment 01273 302826

<http://www.thehouseofrayne.co.uk>

Figurative and Constructive Sculpture



THE HAND
51" £500



MEDUSA ROOT
16" £150



VULTURE
30" WINGSPAN £600

Kinetic Art

Kinetic energy is the visible effect of two forces moving against each other.



SEA ANEMONE MOBILE
27" £500



VARIATION ON A POPPY
27" HIGH £2000



MARINE FLOWER DANCE 33"
HIGH £2000



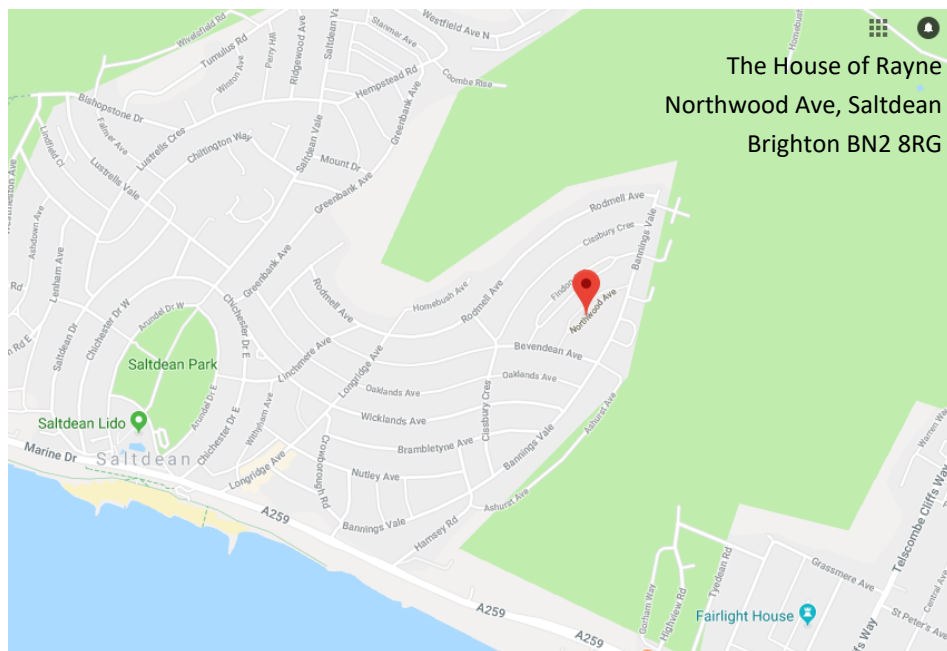
EVE MOBILE
40" £500

The House of Rayne – A Private Art Gallery Near The South Downs

Opens Daily by appointment 01273 302826

<http://www.thehouseofrayne.co.uk>

How to find The House of Rayne



The House of Rayne is located in Saltdean, just 6 miles east of Brighton.
We are open daily by appointment. Please call 01273 302826.



The House of Rayne – A Private Art Gallery Near The South Downs
Opens Daily by appointment 01273 302826
<http://www.thehouseofrayne.co.uk>



The House of Rayne

A private Art Gallery near The South Downs
showing the work of living artist Colin Rayne



Colin Rayne with *The Scream* (after Edvard Munc)
36" high £1000 (Acrylic Spray + Cast Plastic)

***Over 100 artefacts on display. Talks by the artist.
Paintings, Sculpture, Clocks and Kinetic art.***

The House of Rayne – A Private Art Gallery Near The South Downs

Opens Daily by appointment 01273 302826

<http://www.thehouseofrayne.co.uk>